

MyEquipAuctions.com™

February 12, 2024

INDUSTRIAL DIVISION

Online & Onsite Auctions For The Metalworking Industry

ONLINE AUCTION

**Metal Working,
Machine Shop Equipment,
Tooling & More! "900 + Lots"**

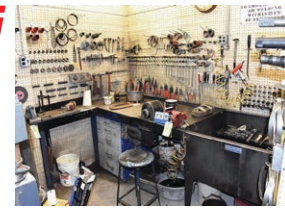
The Estate of Bernie Kaczowski
Rotterdam, NY (US)

Bids Open: March 1, 2024

Inspection: Wednesday, March 20th, 9:00 AM - 1:00 PM

Bids Close: Friday, March 22nd, 11:00 AM

[CollarCityAuctions.com](https://www.CollarCityAuctions.com)



518-895-8150

Global Auction, Real Estate & Certified Appraisal Solutions

UPCOMING AUCTION SALES FROM APEX AUCTIONS USA



**Online Bidding Ends:
February 13, 2024, at 1:00 P.M. EST**

**Surplus to the Ongoing Needs of GE Aerospace
Multi-Location**

Featuring: 2000 Deckel Maho DMU 125P HI-DYN 5-Axis CNC Machining Center • CNC Boring Mills • Bullard Cutmaster Vertical Turret Lathes • Lathes • Hardinge Bridgeport Mills • Generators • Bandsaws • Surface Grinders • Fadal CNC Vertical Machining Centers • Aircraft Tug • Large Quantity of Vidmar Cabinets, Shop Benches, Toolboxes, Heavy Duty Die Racks, Jib Cranes, Welding Positioners, Autonomous Mobile Robots, Transformers • Plus Much More!



**Online Bidding Ends:
February 14, 2024, at 1:00 P.M. EST**

**Surplus Assets to the Continuing Operations of Mears Group Inc.
Located in Illinois**

Featuring: 2016 GMC Pickup • 2006 14' Dump Truck • 16' 7-Ton Dual Axle Trailer, Plus Others • 2019 Portable Arrow Boards • Portable Shot Blast Systems • Large Quantity of Heavy Equipment Attachments Including New Excavator Bucket, Trenching & Digging Buckets, Hydraulic Augers, Snow Pushers, etc. • Large Quantity of Underground Tooling Compaction Boring Tooling & Accessories • Large Amount of Contractors Equipment and Accessories Including Welders, Pumps, Pressure Washers, Hand Tools, Truck Equipment, Rigging & Lifting, Survey & Locating • Plus More!



**Online Bidding Ends:
March 7, 2024, at 12:00 P.M. EST**

**Auction Sale of TLK Tool & Stamping Inc.
Located in Illinois**

Featuring: Stamtec & Minster Open Back Double Crank Gap Frame Presses up to 110-Ton • Federal, Minster, Bliss OBI Presses up to 45-Ton • Perkins 22-Ton C-Frame Presses • Inserter Presses • Large Quantity of Press Feed & Coil Handling • Toolroom Including Mills, Lathes, EDM's EDM Drills, Hydraulic Surface Grinders • Late Model Screw Type Air Compressors • Material Handling • Plus Much More!



**Multi-Million Dollar Offering of a
Swiss Screw Machining Medical Device
Manufacturing Facility by order of
Mark Two Engineering by Fathom**

**Sale Date TBD (Pre-Auction Announcement)
Located in Miami Lakes, Florida**

Featuring: Over (25) As Late As 222 Citizen Cimcon Swiss Turn CNC Screw Machines Including L12X; L12VII, K16, L20E, L20 Most with Automatic Bar Feeds • (3) 2013 Okuma M460-VE Vertical Machining Centers • (5) Late Model Fanuc Robodrill (2) 5-Axes • 8&9-Axes CNC Grinders • Zeiss Contura G2 CMM • 2009 Laserstar Laser Welder • Toolroom Equipment • Plus Much More!

REGISTER TO BID

Aa

Apex Auctions

Mathew Koster

315 Walt Whitman Road • Huntington Station, NY 11746

mkoster@apex-group.com • (631) 418-8850

View our sales on apexauctions.com

(5) UPCOMING AUCTIONS

650 St. Croix Avenue • New Richmond, WI 54017

Rise.org #2



**BEGINS: TUES, FEB. 6TH
6:00 AM CST**

**ENDS: TUES, FEB. 13TH
10:00 AM CST**



**Surplus to Continued Operations
of Rise.org**

32500 Excellence Avenue • Pueblo, CO 81001

Kurt Manufacturing



**BEGINS: TUES, FEB. 20TH
6:00 AM CST**

**ENDS: TUES, FEB. 27TH
10:00 AM CST**



**Complete Machine Shop Due to
Relocation of Division.**

2312 East Avenue South • La Crosse, WI 54601

**Trane Technologies
#8**



**BEGINS: TUES, MAR. 5TH
6:00 AM CST**

**ENDS: TUES, MAR. 12TH
10:00 AM CST**

**PHOTO'S
COMING
SOON!**

**Surplus to the Continued Operations of
Trane Technologies**

8406 Sunset Road NE • Spring Lake Park, MN 55432

Rise.org #3



**BEGINS: TUES, MAR. 12TH
6:00 AM CST**

**ENDS: TUES, MAR. 19TH
10:00 AM CST**

**PHOTO'S
COMING
SOON!**

**Surplus to Continued Operations
of Rise.org**

8370 W. 35W Service Drive NE • Blaine, MN 55449

March 2024 Machine Tool Marketplace



**BEGINS: THURS, MAR. 7TH • 6:00 AM CST
ENDS: THURS, MAR. 21ST • 10:00 AM CST**

**Wide Variety of Metalworking Machinery
and Related Items. Accepting Consignments
Starting on Thursday, January 26th.
Call (612) 991-7008 for More Information.**



Premier
Machinery Auctions, LLC

**8370 W. 35W Service Drive NE
Blaine, MN 55449**

Phone: (612) 991-7008

info@premiermachineryauctions.com

www.premiermachineryauctions.com

DON'T MISS THE AUCTION EVENT OF THE YEAR!

GET MORE IN '24

**JEFF MARTIN AUCTIONEERS ANNUAL WINTER KISSIMMEE FLORIDA
CONSTRUCTION & TRANSPORTATION LIVE 4-DAY AUCTION EVENT**

FL AU4483

FL Firm License
#AB3277

FEBRUARY 12 - 15 KISSIMMEE, FLORIDA

**AUCTION YARD
NOW OPEN**
For Receiving Consignments
Monday - Friday, 8 AM - 4 PM

**6,000+
AUCTION
ITEMS**

**4 AMAZING DAYS OF AUCTIONS, 4 RINGS EACH DAY!
THE AUCTION EVENT OF THE YEAR! DON'T MISS IT!**

**Freight Friendly Easy Access Site
5000 OREN BROWN ROAD**
(At The Intersection of Poinciana Blvd. & Oren Brown Road)

JEFF MARTIN INC.
AUCTIONEERS
Experience the Difference!

844.450.6200 | JeffMartinAuctioneers.com

KISSIMMEE ANNUAL WINTER CONSTRUCTION & TRANSPORTATION PUBLIC AUCTION

FEBRUARY 12 - 15 | KISSIMMEE, FLORIDA

*Get More
In '24*



AUCTION TIMES FOR EACH DAY!

RING 1: BEGINS AT 9 AM ET

RING 2: BEGINS AT 9:30 AM ET

RING 3: BEGINS AT 10:00 AM ET

RING 4: BEGINS AT 10:30 AM ET

INSPECTION/PREVIEW: MONDAY, FEBRUARY 5TH THROUGH AUCTION DAY!

DAY 1: MONDAY, FEBRUARY 12

PAVING EQUIPMENT, MTL & SKID STEERS,
PAVING PARTS & ATTACHMENTS, MTL & SKID
STEER ATTACHMENTS, & MISC ITEMS

DAY 2: TUESDAY, FEBRUARY 13

EARTHMOVING EQUIPMENT, PARTS
& ATTACHMENTS, ALL EXCAVATOR
ATTACHMENTS, & MISC ITEMS

DAY 3: WEDNESDAY, FEBRUARY 14

CRANES, AERIAL EQUIPMENT & AERIAL SUPPORT
ITEMS, GENERATORS, WELDERS, FORKLIFTS, FARM
EQUIPMENT & RELATED ITEMS, & MISC ITEMS

DAY 4: THURSDAY, FEBRUARY 15

TRUCKS, PICKUPS, TRAILERS, SHIPPING
CONTAINERS, ENGINES, PARTS, & MISC ITEMS

844.450.6200 | JeffMartinAuctioneers.com

AUCTION CALENDAR

MAJOR CAKE & PASTRY PRODUCTION PLANT

**JAN.
24TH**

Livonia,
MI

Virtual Webcast Sale -

Formerly operated by Awrey's Bakery

- Pastry Production Equipment
- Dough Mixer, Mixers, Cooling Pans & More
- Packaging Lines & Equipment



IN PARTNERSHIP WITH

Maynards



COMPLETE TORTILLA CHIP PRODUCTION LINE

**FEB.
1ST**

Union City,
CA

Timed Online Auction -

Formerly of Best Express Foods

- Corn Grinding through 400 micron Water Cooling
- Continuous Processing through Bulk Bag Packaging
- Mobile Corn Grinding Bins



IN PARTNERSHIP WITH

CFM Worldwide
Pre-owned Food Equipment



MOBILE CANNING & LABELING CO-PACKER

**FEB.
15TH**

Poway,
CA

Timed Online Auction -

Excess Assets to On-Going Operations of One Source Industries

- Mobile Canning
- Can Sleeving and Labeling
- Facility Support Equipment



COMPLETE SESAME SEED PROCESSING FACILITY

**MAR.
5TH**

Taylor,
MI

Time Online Auction -

Formerly operated by Sesaco

- Seed Roasting & Cooling
- Grinding & Milling
- Cleaning, Peeling and Drying



IN PARTNERSHIP WITH



Leading Industrial And Commercial Liquidators.

Contact Rabin Worldwide For Your Liquidation And Equipment Needs Today.

Check Rabin.com For More Upcoming Food & Confectionery Equipment Auctions

+1.415.522.5700

Email: info@rabin.com

See it all now at... **rabin.com**



PUBLIC AUCTION

LIVE ON-SITE W/WEBCAST BIDDING

TUESDAY * FEBRUARY 13th * 10:00AM
STROPE MANUFACTURING, INC.
1240 S. JOPLIN AVE • TULSA, OK 74112

INSPECTION: MONDAY • FEBRUARY 12TH • 9:00AM-4:00PM



OWNER RETIRING - PRECISION CNC MACHINE SHOP



DUCKWALL & COMPANY, INC.
AUCTIONEERS • APPRAISERS
AUCTIONEERS: DANIEL R DUCKWALL & CODY DUCKWALL

918.836.3611 OFFICE
918.205.9033 FAX
duckwallauctions.com
P.O. Box 580187 • Tulsa Ok 74158

BidSpotter.com

Online Bidders

Register 48 Hours Prior To Auction Buyers Premium Will Apply
See duckwallauctions.com For More Details

LIVE WEBCAST AUCTION

NO ONSITE BIDDING

ULTRA PRECISION DEFENSE CONTRACTOR

TUESDAY FEB 13TH @ 10:00 AM CST

6000 LEMMON AVE, DALLAS, TX, 75209
INSPECTION BY APPOINTMENT ONLY
MUST BE A U.S. CITIZEN TO INSPECT



2010 DMG DMC 125FD DUOBLOCK (5 AXIS)



2008 MORI SEIKI NT 4200DCG/1000SZ (5 AXIS)



2009 MORI SEIKI NT 4250DCG/1500SZ (5 AXIS)

FOR INFO OR INSPECTION CALL 817-222-9848



2014 MAKINO A100E HORIZONTAL MACHINING CENTER



2012 KITAMURA HX 1000I MACHINING CENTER WITH KOMA 5 AXIS

ROTARY



INVESTMENT
RECOVERY SERVICES
FOR THE MAXIMUM RETURN

WEBCAST ONLY AUCTION

VICKERS METAL WORKS, INC.

6701 Edgewater Commerce Parkway
Orlando, FL 32810



WEBCAST AUCTION - OWNER RETIRING AFTER 40 YEARS - COMPLETE METAL FABRICATION SHOP INCLUDING 2016 EUROMAC CNC TURRET PUNCH, ACCURPRESS AND ACCUSHEAR, CNC FOLDERS, PLASMA TABLES, ANGLE ROLLS, ROLLFORMERS, FORKLIFT, TRUCKS, WELDERS AND MORE

SALE DATE: TUES, FEB. 13TH • 10:00 AM

INSPECTION: Day Prior From 10:00 AM to 4:00 PM

FEATURES:

CNC TURRET PUNCH AND CNC FOLDERS

- 33 Ton Euromac Model MBX6 Plus 1250/30-2250 CNC Turret Punch with (3) Auto Index (2016)
- Thick Punch Tooling
- 14 Ga. x 12' Roper Whitney Model AB1214KE2 CNC Folder (2014)
- 14 Ga. x 10' Roper Whitney Model AB1014K CNC Folder

SCISSORS AND PRESS BRAKES

- 1/4" x 12' Accurshear Model 625012 Shear (2001)
- 10 Ga. x 10' Niagara 610 Shear
- 175 Ton x 12' Accurpress Model 717512 CNC Hydraulic Press Brake (2000)
- 70 Ton x 6' Betenbender Model 6-70T Hydraulic Press Brake

CNC PLASMA TABLES

- 5' x 12' Lockformer Model Vulcan Plasma Cutter (2018 Retrofitted Control and Power Supply)

MISCELLANEOUS FABRICATION MACHINERY

- 3" x 3" x 3/8" Swebend Model SB3B-85 Hydraulic Angle Rolls (2015)
- 8' Lown Plate Rolls

- 50" Baileigh Model SR-5016 Plate Rolls (2020)
- Pullmax Model P5/2 Circle Shear
- 55 Ton Cleveland Steel Tool Hydraulic Ironworker
- 6 Ton Pemserter Series 4 hardware Insertion Press (2006)
- (2) Miller Dynasty 350 and (1) Dynasty 280 Welders
- Miller Trailblazer 301G Genset Diesel Welder with Trailer
- (2) 4' x 4' Acorn Tables

TRUCKS, VAN AND TRAILERS

- 2016 Ford F-150XL Pickup Truck with 33,000 Miles
- 2009 Ford F-150 Pickup Truck
- 2020 Ford Transit Cargo Vanc with 6,000 Miles

16' Tandem Axle Trailer

SHOP SUPPORT EQUIPMENT

- 5,000 Lb. Toyota 7FGCU25 LP Gas Lift Truck
- (2) 10 HP Ingersol Rand Vertical Tank Air Compressor
- 40' and 20' Containers
- Large Quantity of Shop Support Equipment Including Saws, Sanders, Finger Brakes, Hand Tools and More

18% BUYER'S PREMIUM FOR ALL PURCHASES

Cincinnati Industrial Auctioneers - License No. 25
Jeffrey L. Luggen - License No. 1125 • Joseph M. Luggen - License No. 5248

BidSpotter



**CINCINNATI
INDUSTRIAL
AUCTIONEERS**
auctioneers | appraisers | since 1961

Check our website for ongoing & future auctions!

For Photo Gallery & Sale Catalog & Additional Information Visit:

www.cia-auction.com



Tel: 713-462-5800

www.harris-auctions.com

Live Webcast Auction

BidSpotter.com

No onsite bidding. All bids made at www.BidSpotter.com

Surplus Asset Management Experts

Auctioneer: Jean A. Harris, Jr. Texas Lic. 18210

**Plant Closures of
Laser Key Products,
Fluid Power Equipment,
Major Houston Coating &
Grinding Operation and much more**

Auction: Wednesday, Feb. 14, 10:00am CT
Inspection: Tuesday, Feb. 13, 9 - 3pm CT
By Appointment only
Location: Thermal Cincinnati Spray
4303 South Drive
Houston, TX 77053

Featuring industry favorites - HAAS, MORI SEIKI, DAEWOO, NORTON, CINCINNATI, LANDIS, LAGUN & MORE!



**All items must be removed by:
Wednesday February 28 at 3pm!**

*Pre-Auction offers for major assets considered

2-DAY AUCTION **LIVE WEBCAST & ONLINE**



Former Assets of a

MAJOR DEFENSE CONTRACTOR

Full Facility Closure

SALE DATES

**February 20 & 21
10 AM CT**

SALE LOCATION

165 Alsonia St., Estill Springs, TN 37330

INSPECTION

Monday, February 19, from 9 AM to 3 PM CT, by appt. only



2013



2006



2006

2 AVAILABLE



2013



2000



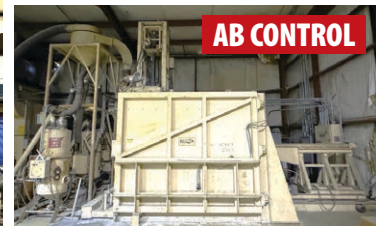
50" X 384"



2012



800 TON



AB CONTROL



FEATURING: 2013 MAZAK VCN510C 5X-II 5-Axis VMC, 2006 OKUMA Multus B300-W 5-Axis CNC Lathe, SNK FSP-120V 5-Axis Profile Mill, (2) 2013 YAMA SEIKI VMC's, (6) MAZAK & FADAL VMC'S 2000 HANKOOK VTB125C 48" VTL, Turning Centers, (3) OKUMA & MAZAK HMC's, (2) ONSRUD CNC Gantry Mills, 2012 MITSUBISHI MV2400S EDM, TACCONE 4000 Ton Forging Press, AVCO 800T Straightening Press, POREBA & SUMMIT Engine Lathes up to 50" x 384", Fabricating Equipment, ZERO 120" Rotary Shotblast, Welding, Huge Qty of Tooling, LISTA Cabinets & Facility Support Assets

AUCTION CONTACT:

Jennifer Reiner • (847) 545-6374
jennifer@perfectionindustrial.com



**PERFECTION
Industrial Sales**

www.perfection.global/auctions

★ MAJOR 3-DAY ONLINE AUCTION ★

Surplus to the
continuing
operations of



465 Railroad Avenue
Camp Hill, PA 17011

**3,000+
LOTS**

**DATE: BIDDING ENDS WEDNESDAY, FEBRUARY 21ST,
THURSDAY, FEBRUARY 22ND, AND
FRIDAY, FEBRUARY 23RD**

Inspection: Monday & Tuesday, February 19th & 20th from 9:00 AM – 4:00 PM

WORLD CLASS TOOL MANUFACTURER



• HIGHLIGHTS •

- Plastic Injection Molding Machines
- Plastic Support Equipment
- CNC Wire Drawing & Tube Bending Equipment
- CNC & Conventional Machine Tools
- Stamping Presses
- Metal Fabrication Equipment
- Tempering Furnaces & Finishing Equipment
- Fanuc Robots & Robotic Arms
- Massive MRO Spare Parts Crib
- Overhead Bridge Cranes
- Material Handling Equipment
- Plant Support Equipment
- And Much More!

Terms: To be sold in accordance w/CRG terms as published on web & auction catalog. PA Lic #AU005257



Sale In Conjunction With



www.crgllc.com • (800) 300-6852

ONLINE AUCTION ONLY

AUDIO AMERICA, INC.

Assignment for the Benefit of Creditors Case No. CACE-23-018356

Auction Ends/Lots Close:
Thursday, February 22, 2024 at 10:00 A.M.

Pick-up | Removal Locations: 3500 Highlands Parkway SE, Ste 100, Smyrna, GA 30082

Inspection | Preview Date: Wed, February 21 from 10:00 A.M. to 4:00 P.M. by appointment

Sale will consist of huge inventory of new and returned electronics and consumer goods, vast quantity of heavy duty and medium duty pallet racking sections, forklifts, warehouse equipment, pallet jacks, shelving units, packing/shipping materials and accessories, rolling carts, worktables, ladders, office



furniture, office equipment, computers, 18% Buyer's Premium (BP) will apply to all lots. printers, computer peripherals, merchandise, and related assets.

Live Online
Bidding

Powered By:
proxibid

Check Website for More Info., Photos, and Catalog:
www.moeckerauctions.com

**MOECKER
AUCTIONS** INC.

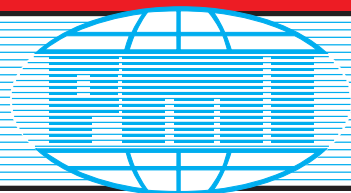
AUCTIONEERS • LIQUIDATORS • APPRAISERS



AU 3219, Eric Rubin
AB 1098

1885 Marina Mile Blvd., Suite 103 • Fort Lauderdale, FL 33315
Toll Free 800-840-BIDS • Phone: 954-252-2887
info@moeckerauctions.com

www.moeckerauctions.com



COMBINATION AUCTION & ORDERLY LIQUIDATION

MAJOR FULL-SERVICE STEEL FOUNDRY CLOSING

PART 1: AUCTION OF THE MACHINE SHOP & SELECT PLANT SUPPORT

PART 2: ONGOING ORDERLY LIQUIDATION SALE OF FOUNDRY EQUIPMENT

THURS., FEB. 22 • 10:00 A.M. CST
LIVE ONLINE WEBCAST (NO ONSITE BIDDING)

INSPECTION: Tuesday & Wednesday, February 20 & 21,
9:00 A.M. to 4:00 P.M. & Morning of Sale



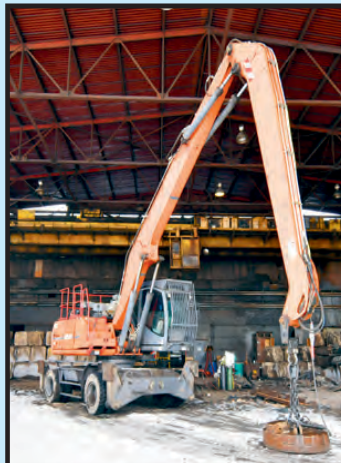
144" RAFAMET VERTICAL TURRET LATHE

FOR BIDDING AT THIS AUCTION. Go to www.pmi-auction.com and click on the calendar page for link to online bidding platforms for this auction.

**PART 1: SIVYER
STEEL CASTINGS, LLC**

225 33RD STREET,
BETTENDORF, IOWA 52722

BUYER'S PREMIUM: 18%



ATLAS MDL. 300MH EXCAVATOR



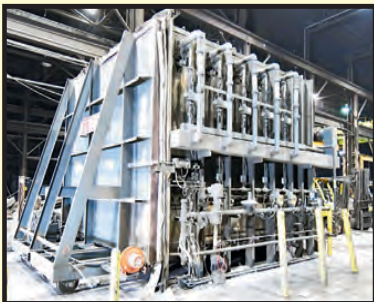
CATERPILLAR CD125-K366 DIESEL
BACKUP GENERATOR SET



NDI OPTOTRAK PRO SERIES 2000
WIDE AREA C.M.M.

2008

PART 2: ONGOING ORDERLY LIQUIDATION SALE OF FOUNDRY EQUIP.



BEAVERMATIC 12"W. X
12"L. X 8"H. GAS FIRED
CAR BOTTOM FURNACE

GENERAL KINEMATICS
18' X 14' SHAKEOUT
DECK

Read Partial
Terms and
Conditions on
Back Page of
Brochure



UNUSED



LECO ELEMENTAL ANALYZER

**2
AVAILABLE**

Sale
Conducted
By:

PLANT & MACHINERY INC.

AUCTIONEERS • APPRAISERS • LIQUIDATORS • REAL ESTATE

1304 Langham Creek Drive, Suite 454, Houston, Texas 77084

PHONE: (713) 691-4401

FAX: (713) 672-7905

E-MAIL: pmi@pmi-auction.com
WEBSITE: www.pmi-auction.com

In Conjunction With:

**Federal
Equipment
Company**

WEBCAST ONLY AUCTION

OWNER RETIRING CENTRAL OHIO METAL STAMPING

1055 Claycraft Rd. • Columbus, Ohio 43230



WEBCAST AUCTION OF COMPLETE WELL MAINTAINED STAMPING FACILITY INCLUDING (5) AMADA GAP FRAME PRESSES TO 330 TON NEW AS 2003, (3) MINSTER GAP PRESSES, CINCINNATI BRAKE, NIAGARA SHEAR, TOOLROOM, FORKLIFTS AND SUPPORT EQUIPMENT

SALE DATE: WED, FEB. 28TH • 10:00 AM

INSPECTION: Day Prior From 10:00 AM to 4:00 PM or by appointment with jeffjr@cia-auction.com

STAMPING PRESSES

- 330 Ton Amada TPWL-300 DC Gap Press, 9.84" Stroke, 20 - 40 SPM (New 2003)
- 220 Ton Amada TP-200EX SC Gap Press, 9.64" Stroke, 25 - 45 SPM (New 2006)
- (2) 165 Ton Amada TP-150EX SC Gap Presses, 6.89" Stroke 30-55 SPM (New 2000)
- 165 Ton Minster OBS-150 SC Gap Press, 9.84" Stroke
- 100 Ton Niagara Model E90S SC Gap Press
- 88 Ton Amada TPL-80SI SC Gap Press, 7.09" Stroke, 40-70 SPM (New 2001)
- (2) 75 Ton Minster No. 7SS OBS Fixed Base Presses; 7" Stroke, 0-90 SPM
- 50 Ton Amada TP-45EX SC Gap Press (New 2000)

FEED EQUIPMENT

- Dallas D400-18X18 Air Feed (New 2021)
- Dallas DRFMS-412 Electronic Feed (Late)
- (5) Coil Cradles from 3,000 to 5,000 Lb.

FABRICATING MACHINERY

- 135 Ton x 12' Cincinnati Proform CNC Press Brake (New 2004)
- 1/4" x 12' Niagara JF-12-1/4 Squaring Shear
- Haeger 618-Plus-L Hardware Insertion Press
- Baliegh PR-413 Power Roll (New 2007)
- Memoli Eurekamatic Universal Power Bender (New 2007)

SAWS / SPOT WELDERS / FINISHING MACHINES

- (2) 100 KVA TJ Snow PPA-1-18 Spot Welders
- 16" x 20" Hem H105LA-C Auto Horizontal Band Saw
- 11 Cu. Ft. Hammond Gemini 12 Vibratory Finishing Bowl (New 2015)
- 36" Ceemco UR-1137 Wide Belt Sander
- 24" x 48" Dynamo SBC-420 Blast Cabinet
- Doall and Wells Band Saws

CNC / EDM / TOOLROOM

- Hurco VMX-42 CNC VMC (New 2008)
- Hurco VMX-1P CNC VMC (New 2004)
- Accutec HP-350ZNC EDM Drill (New 2015)
- Agie Agicut Classic 3S CNC Wire EDM
- Willis RD-1300H Radial Arm Drill (New 2007)
- 12" x 24" Okamoto ACC-1224 Hydraulic Surface Grinder

- Lathe, Mill, Drills, Grinders, Tooling and Accessories

SUPPORT EQUIPMENT

- (2) 5,000 Lb. Nissan LPG Forklifts
- (2) 40-HP Air Compressors by Kaeser and Atlas
- Pallet Rack and Heavy Die Rack
- Steel Coil Inventory
- Stamping Dies and Parts to be sold for scrap
- Hoppers, Carts, Tools and Related
- Clean Office Furniture

18% BUYER'S PREMIUM FOR ALL PURCHASES

Cincinnati Industrial Auctioneers, Inc. - License No. 63-1983-10439

Jeffrey L. Luggen - License No. 57-1983-33789 • Joseph M. Luggen - License No. 2010-0000-19

BidSpotter



**CINCINNATI
INDUSTRIAL
AUCTIONEERS**
auctioneers | appraisers | since 1961

Check our website for ongoing & future auctions!

For Photo Gallery & Sale Catalog & Additional Information Visit:

www.cia-auction.com

ONLINE ONLY Auction

**NO LONGER NEEDED IN THE CONTINUING OPERATIONS OF
ACTIVE PRECISION MANUFACTURING, INC.**

1975 North 17th Ave. • Melrose Park, IL 60160

BIDDING STARTS: WEDNESDAY, FEBRUARY 28TH

BIDDING ENDS: WEDNESDAY, MARCH 13TH



FEATURING:

- 2016 NEWAY 86 IN X 196 IN MODEL NL 2050H CNC FLAT BED LATHE
- GIDDINGS & LEWIS 84 IN. MODEL 84VTC CNC VERTICAL BORING MILL
- VANGUARD MODEL CAK80485D CNC LATHE
- TOS CELAKOVICE 60 IN X 15 FT MODEL SU125 ENGINE LATHE
- 2005 HAAS MODEL VF-2B CNC VERTICAL MACHINING CENTER
- 2004 HAAS MODEL VF-4B CNC VERTICAL MACHINING CENTER
- HAAS 4TH AXIS
- DAEWOO PUMA MODEL 12L-B CNC TURNING CENTER (1996)
- SUMMIT MODEL HTM C5 CNC HORIZONTAL BORING MILL, BUILT-IN ROTARY TABLE
- MEUSER MODEL M76.3FS HORIZONTAL BORING MILL
- GIDDINGS & LEWIS MODEL 340T HORIZONTAL BORING MILL
- LEBLOND / MAKINO CNC VERTICAL MACHINING CENTER (1986)
- KURAKI CNC VERTICAL MACHINING CENTER
- MARVEL SERIES 8 BANDSAW
- DYNAMIC MODEL 1760 LATHE
- JET VERTICAL MILLING MACHINE
- BRIDGEPORT 1-1/2HP VERTICAL MILLING MACHINE
- MHT 6 X 12 HAND FEED SURFACE GRINDER (1986)
- SCHERR-TUMICO 30 IN. OPTICAL COMPARATOR
- INGERSOLL-RAND 40HP MODEL EP40SE AIR COMPRESSOR
- INGERSOLL-RAND COMPRESSED AIR DRYER
- WELDING TABLE
- WELDERS
- (6) JIB CRANES
- HYSTER 25,000LB. CAP. MODEL 250 YARD LIFT TRUCK
- CATERPILLAR 10,000LB. FORKLIFT TRUCK
- 2006 FORD F-550 FLAT BED TRUCK
- 17 FT. TANDEM AXLE EQUIPMENT TRAILER



W GLENN A.
INTERNITZ LLC
INDUSTRIAL AUCTIONEERS & APPRAISERS

1401 Lunt Avenue • Elk Grove Village, Illinois 60007 • P. 773-290-1827 • F. 773-866-9601
glenn@winternitzauction.com

www.winternitzauction.com

ONLINE AUCTION SALE

METALWORKING

MACHINERY & EQUIPMENT

Online Bidding Ends:

Thurs., Feb. 29, 2024 starting at 12 Noon

Assets Located at: **ACR Machine**
200 Morgan Way • Morgantown, PA 19543



AUCTION TO INCLUDE: 2017 Dodge Ram Pickup Truck, VIN: 3C6JR6DT1HG675310 • Belmont Trailer, 18', Tandem Axle • 2008 & 2012 Southwestern Industries TRAK CNC Lathes • Hardinge Manual Lathe • (2) 2018 Hurco CNC 5-Axis Dbl. Column High Speed Machining Centers • 1996 Mazak CNC Horizontal Machining Center • 1996 Fadal 6030 CNC Vertical Machining Center • 1993 & 1998 Fadal 4020 CNC Vertical Machining Center • Hyundai CNC 5-Axis Horizontal Boring Machine • Clausing Knee Mill w/ProtoTRAK Controls • Bridgeport Knee Mill w/ProtoTRAK CNC Controls • 2013 TRAK CNC Vertical Knee & Bed Mills • 2021 Fowler Trimos Height Gage • 2019 Faro Arm Portable Coordinate Measuring Machine • Miller MIG & TIG Welder • (2) Vision CNC Router/Engravers • Sunnen Honing Machine • Dake Shop Press • DoAll Cut Off Saw • Grob Bandsaw • Tennsmith 52" Foot Shear • Shel Lab Oven • Electro Arc Metal Disintegrator • Kalamazoo Vibratory Tumbler • Cyclone Sand Blast Booth • Small Paint Booth • Quincy Air Compressor • Ingersoll Rand Screw Compressor • Vertical Air Tank • Hand & Power Tools • Assorted Tooling, End Mills, Tool Holders, Drills, Etc. • Calibrated Inspection Equipment • Office Furniture & Equipment.

Preview: Monday, February 26th from 9:00 AM to 4:00 PM

FOR MORE
INFORMATION

Visit
Comly.com

Wm. F. Comly & Sons, Inc.



COMLY
AUCTIONEERS & APPRAISERS
1834

(215) 634-2500 - auctions@comly.com

WEBCAST ONLY AUCTION



TOOLTEx, INC.

6497 Seeds Road
Grove City, OH 43123



WEBCAST AUCTION OF COMPLETE CNC SHOP, OWNER RETIRING AFTER (35) YEARS, INDUSTRY LEADER IN MANUFACTURING PLASTIC ASSEMBLY AND WELDING MACHINERY, 2020 HAAS ST-20Y CNC LATHE, (3) HAAS VMC'S (TO 2015), TOOLROOM, INSPECTION, SUPPORT EQUIPMENT – TOOLTEx ULTRASONIC WELDERS AND ASSEMBLY MACHINERY, PARTS AND SUPPLIES

SALE DATE: TUES, MARCH 5TH • 10:00 AM

INSPECTION: Day Prior From 10:00 AM to 4:00 PM

CNC VERTICAL MACHINING CENTERS

- Haas VF4SS CNC VMC (2015) **ONLY 2,253 CUTTING HOURS**
- Haas VF4 CNC VMC (2012) **ONLY 3,651 CUTTING HOURS**
- Haas VF2 CNC VMC (2012) **ONLY 1,369 CUTTING HOURS**
- Large Qty. Tooling and Accessories: (75+) 40 Taper Toolholders, Probes, Vises and Cutters

CNC TURNING CENTERS / LATHES

- Haas ST20Y CNC Turning Center with Live Tooling (2020) **ONLY 1,475 CUTTING HOURS**
- Haas TL-2 CNC Lathe

ULTRASONIC WELDERS / TOOLTEx MACHINES

- (4) USS Ultrasonic Welders
- ToolTex Spin Welders
- ToolTex Staking Machinery
- ToolTex Plastic Assembly Equipment
- Large Quantity of Supplies and Parts for Manufacturing / Maintenance

TOOLROOM

- 14" x 40" Acra-Turn HQ1440 Toolroom Lathes

- Finishing Machinery
- Roll-In Vertical Band Saw
- Jet "Elite" Horizontal Band Saw
- Drill Presses
- 55 Ton Ramco H-Frame Press
- Large Quantity of Cutting Tools and Indexes

MISCELLANEOUS MACHINERY

- (3) Welders by Miller
- Lincoln LFA3.1 Portable Fume Collector
- Blast Cabinet, Saws, Sanders
- Flex Arm Tapers with Carts
- Assembly Stations and Related

SHOP SUPPORT EQUIPMENT

- 6,000 lb. Caterpillar LP Gas Lift Truck
- UpRight Electric Man Lift
- Quincy QGS-10 Horizontal Air Compressor
- BECO Air Dryer
- Shop Support Equipment Including Banding Carts, Fans, Pallet Trucks, Power Tools, Hand Tools, Test Equipment, Toolboxes, Office Furniture and More

18% BUYER'S PREMIUM FOR ALL PURCHASES

Cincinnati Industrial Auctioneers, Inc. – License No. 63-1983-10439

Jeffrey L. Luggen – License No. 57-1983-33789 • Joseph M. Luggen – License No. 2010-0000-19

BidSpotter



CINCINNATI INDUSTRIAL AUCTIONEERS
auctioneers | appraisers | since 1961

Check our website for ongoing & future auctions!

For Photo Gallery & Sale Catalog & Additional Information Visit:

www.cia-auction.com

★ ★ ONLINE ONLY AUCTION ★ ★

Surplus to the
ongoing needs of



Graphic
Packaging
INTERNATIONAL

1500 N. Pitcher Street
Kalamazoo, MI 49007

DATE: BIDDING ENDS THURSDAY, MARCH 7TH

Inspection: By Appointment Only

300 TPD COATED BOXBOARD PAPER MILL



• HIGHLIGHTS •

- 118" Paper Machine with Valmet Winder
- Beloit DD-4000 and DD-4500 Refiners
- Voith Multimizer
- Voith Sulzer Rejectsorters
- Rebuilt Nash & Goulds Vacuum & Centrifugal Pumps
- Spare Motor Inventory
- High-Capacity RO System
- Maintenance Tools & Accessories
- Gardner Denver Air Compressors & Dryers
- Electric Switchgear including MCCs & Transformers
- And More

Large MRO Spare Parts Inventory including Bearings, Electrical, Pump Impellers, Roll Cylinders, and much more

Terms: To be sold in accordance w/CRG terms as published on web & auction catalog.



In Conjunction With



Can-Am Machinery Inc.
Technical Advisors

www.crgllc.com • (800) 300-6852

CONSIGNMENTS ACCEPTED NOW

2-Day Spring Public AUCTION March 14th & 15th

*What can we sell for you?
Deliver items Now!*

Deliver: Monday - Friday
8am - 4pm

Location: 13340 Florida Blvd.
Livingston, LA 70754



Auction Details and Lot Listings at: www.HendersonAuctions.com



**Henderson
AUCTIONS**

800.850.2252 | 225.686.2252 | info@hendersonauctions.com
10% Buyer's Premium on each item purchased. | Auctioneer: J. Henderson LA AB-459

Liquidations | Government Surplus | Marine
Industrial | Farm | Construction | Collector Cars
What can we sell for you? 225.686.2252
Location: 13340 Florida Blvd. Livingston, LA 70754

NAA
Auctioneer

LOUISIANA
AUCTIONEERS
LAA



PUBLIC AUCTION ONLINE ONLY MACHINE SHOP SERVICE TOOL AND DIE TWO, INC.

ENDING: TUESDAY, FEBRUARY 13, 2024 @ 9:00 AM

1811 S. 66TH STREET WEST ALLIS, WI 53214

INSPECTION DATE: TUESDAY, FEBRUARY 6, 2024 @ 10:00 AM TO 4:00 PM

DIRECTIONS: From Milwaukee Take I94 West To Exit 307B For Hawley Road. Turn South On Hawley Road. Continue Onto 60th Street. Turn Right Onto W. National Avenue. Turn Left Onto S. 66th Street.



SHOP EQUIPMENT

- (2014) Hurco CNC Vertical Machining Center, Model VM-20L, s/n H-V2E0785
- (2004) Hurco CNC Vertical Machining Center, Model VM-2, s/n H-V20183
- (2008) Hurco CNC Vertical Machining Center, Model VM65440T, s/n H-642019
- (1985) Mitsubishi CNC Wire Type EDM, Model DWC-110, s/n 0511H208
- (1989) Mitsubishi CNC Wire Type EDM, Model DWC-110, s/n 5911K840
- (1989) Mitsubishi CNC Wire Type EDM, Model DWC-110, s/n 0811K203
- (1989) Mitsubishi CNC Wire Type EDM, Model DWC-90H, s/n 5909K758
- Blanchard Rotary Grinder, Model 22-42, s/n 14106
- Blanchard Rotary Grinder, Model 20-36, s/n 14324
- Chevallier Surface Grinder, Model FSG-1640AD, s/n 410372
- (1989) Kent Surface Grinder, Model KGS-306AHD, s/n 890361-10
- Medina Vertical End Grinder, Model B, s/n 259
- (1983) Kent Surface Grinder, Model KGS-300AHD, s/n 830811-3
- Hang Surface Grinder, Model Super 612, s/n 10518
- Brown & Sharpe Surface Grinder, Model 2LB, s/n 20123
- Boyar Schultz Surface Grinder, Model Challenger H618, s/n C-2317
- Boyar Schultz Surface Grinder, Model SixTwelve, s/n 18065
- (Circa 1945) Cincinnati 8' x 125 Ton Mechanical Press Brake, Model 50-6, s/n 20189
- Pexto 72" Mechanical Squaring Shear, Model G-372C, s/n H-7842
- Franco Vertical Mill, Model 112-TM, s/n MA-K65WU8
- Pexto 37" Jump Shear, Model 137-L, s/n 9167
- Giddings & Lewis 5" Horizontal Boring Mill/Drill, Model 340-T, s/n 7067
- (1972) Wells Horizontal Band Saw, Model W-9, s/n W721779
- Bridgeport Vertical Mill, s/n 63679
- Bridgeport Vertical Mill, s/n 164286
- State 20" Disc Grinder, Model D-20, s/n H-250-D
- Clausen Colchester Gap Bed Lathe, Model 21", s/n 8/0057/00637
- Hardinge Dowlat 2nd Operation Lathe, Model HC, s/n HC-903C
- Clausen Engine Lathe, Model 5914, s/n 512237
- DoAll 16" Vertical Band Saw, Model ML, s/n 4712834
- LeBlond Regal Engine Lathe, s/n 2E1167
- Bridgeport Vertical Mill, s/n 120061
- Bridgeport Vertical Mill, s/n 79072
- Arboga (Sweden) Geared Head Drill Press, Model GM3512, s/n 224038
- Arboga (Sweden) Geared Head Drill Press, Model E-625L, s/n 179986
- Delta 17" Drill Press, s/n 127-6996
- Delta 17" Drill Press, s/n 41-9472
- Carlton Radial Arm Drill Press, Model 4' x 11" Dia. Column, s/n T-D-P-C-19922
- (1944) American Holec Wizard "L" Base Radial Arm Drill Press, Model 4' x 13" Dia. Column, s/n 68133
- Carlton Radial Arm Drill Press, Model 5' x 11" Dia. Column, s/n 1A-1513
- Cincinnati Bickford Radial Arm Drill, Model 4' x 9" Dia. Column, s/n 1R5117
- Carlton Radial Arm Drill Press, Model 4' x 11" Dia. Column, s/n 1A-3544
- DoAll 16" Vertical Band Saw, Model 1612-0, s/n 277-70834
- Kearney & Trecker Milwaukee Vertical Mill, Model 5H, s/n 14-3281
- Kearney & Trecker Milwaukee Vertical Mill, Model 3K, s/n 3153
- (1978) Miller Mig Welder, Model D1400, s/n HJ106271
- (1985) Miller Mig Welder, Model CP-300, s/n JF962262
- Hypertherm Plasma Cutter, Model Powermax 350
- (1998) Miller Spot (Resistance) Welder, Model LMSW-52T, s/n KJ279277
- Roussele C-Frame 40 Ton Punch Press, Model 4G, s/n 23676
- Vernon Straight Side 600 Ton Hydraulic Punch Press, Model 600HD, s/n 2324
- Dake Double Acting 4 Post Hydraulic 125 Ton Try-Out Press, Model 18-383, s/n 158625
- Heisk Industries Trace-A-Punch
- Warco OBI 75 Ton Punch Press, s/n 50148
- Starrett CMM, Model Rapid Check-RCS-40-40-24, s/n S-1093
- Jones & Lamson Optical Comparator, Model PC-14A, s/n E-15680
- OC Lab Support Items: Height Gauges, Bore Gauges, Micrometers, Calipers, PinVBlock Sets, Etc.

MATERIAL HANDLING / AIR COMPRESSORS

TRUCKS

SEE WEBSITE FOR FULL LISTINGS

TERMS: No warranties or guarantees. Cash, Cashier's Check or a Check Only With A Bank Letter Guaranteeing Your Check. No Credit Cards. 18% Buyer's Fee.

Register to Bid www.Proxibid.com/gerlach



Reg. WI Auctioneer
#27-53

Gerlach Companies, Inc.

www.GerlachAuctions.com • (262) 367-4950

WEBCAST AUCTION

Electronic Testing, Warehouse, & Machine Shop Equipment

BOSCH SECURITY SYSTEMS

8601 E. Cornhusker Hwy in Lincoln, NE

WEBCAST AUCTION - NO ON-SITE BIDDING

WEDNESDAY, FEB. 14
Starting at 9AM CT

INSPECTION: Day Prior & By Appointment 9AM - 4PM

Electronic Testing Equipment - Spectrum Analyzers, Signal Generators, Audio Analyzers, Multimeters - (200+) Sections **STEEL KING** Pallet Rack w/ Wire Decks (New 2011), Complete Wet and Powder Coat Paint System w/ADS Parts Washer (New 2012), Cardboard Balers, Static-free Work Benches, Metro Racks, **BISHAMON** Lift Tables, **BRIDGEPORT** Mills, Lathes, Grinders, Sheet Metal Equipment, **PEMSERTER**, Shop Office, **GENIE** Scissor Lift, **JLG** 10MSP Aerial Lifts, **GEHL** Skidsteer, Grader Blade, Office Furniture



MYRON BOWLING
AUCTIONEERS, INC.

(513) 738-3311 | MyronBowling.com

NEW MARKETING OPTION DRIP CAMPAIGN

a series of automated emails sent to people who take a specific action on your website

- 1 Initial Email**
- 2 Follow Up Email**
- 3 Reminder Email**

A drip campaign is a series of automated emails sent to people who take a specific action on your website. For any given action, you can choose how many emails to send and the rate at which to send them.

GREAT FOR AUCTIONS, EVENTS, AND MORE!

published by **CATALYST**

call 800-203-9960



BAY AREA AUCTION SERVICES
8010 US HWY 19 N
PINELLAS PARK, FL 33781
(727) 548-9303

ABSOLUTE AUCTION
FORMER "ACE WELDING SUPPLY"



**TUESDAY,
FEBRUARY 20TH
@ 10 A.M.**

LOCATION:
**12828 N.
NEBRASKA AVENUE
TAMPA,
FLORIDA 33612**

PREVIEW:
9:00 A.M. SALE DAY
727-548-9303

www.bayareaauctionservices.com

Upcoming Auctions

Visit our sister site!

MyEquipAuctions
.com**BidSpotter**
FIND
INDUSTRIAL
EQUIPMENT
& MORE.

Date	Auctioneer	Auction Type	Location	
January				
01/22/24 to 02/08/24	USA	ONLINE AUCTION	Freeport, NY	View >
01/23/24 to 02/14/24	Aurora, IL	ONLINE AUCTION	Aurora, IL	View >
February				
02/06/24 to 02/13/24	Premier Machinery Auctions LLC	ONLINE AUCTION	New Richmond, WI	View >
02/08/24	Rabin Worldwide	Time Online Auction	Corrance, CA	View >
02/12/24 to 02/15/24	Jeff Martin Auctioneers, Inc.	ONLINE AUCTION	Kissimmee, FL	View >
02/13/24	Gerlach Companies Inc	ONLINE AUCTION	West Allis, WI	View >
02/13/24	Investment Recovery Services	ONLINE WITH LIVE SIMULCAST AUCTION	Dallas, TX	View >
02/13/24	Drew Wall & Company, Inc.	LIVE WEBCAST AUCTION	Tomball, TX	View >
02/13/24	Investment Recovery Services	ONLINE WITH LIVE SIMULCAST AUCTION	Dallas, TX	View >
02/14/24	Harris Machine Tools, Inc. / Harris Auctions	LIVE WEBCAST AUCTION	Houston, TX	View >
02/15/24	Rabin Worldwide	Time Online Auction	Poway, CA	View >
02/20/24 to 02/21/24	Perfection Industrial Sales		Estill Springs, TN	View >
02/20/24	Bay Area Auction	ONLINE AUCTION	TAMPA, FL	View >
02/21/24 to 02/23/24	Capital Recovery Group, LLC	ONLINE AUCTION	Camp Hill, PA	View >
02/22/24	Moecker Auctions Inc.	Online Auction Only	Smyrna, GA	View >
02/26/24 to 02/29/24	Comly Auctioneers & Appraisers	Time Online Auction	Morgantown, PA	View >
02/28/24 to 03/14/24	Glenn A. Winternitz	Timed Auction	MELROSE PARK, IL	View >
March				
03/05/24 to 03/12/24	Premier Machinery Auctions LLC	ONLINE AUCTION	La Crosse, WI	View >
03/05/24	Rabin Worldwide	Time Online Auction	Taylor, MI	View >
03/05/24	Cincinnati Industrial Auctioneers	Webcast Only Auction	Grove City, OH	View >

[1](#)
[2](#)
[next >](#)
[last >>](#)
www.industrialmachinetrader.com/auctions/upcoming